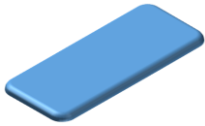


**TECHNICAL DATA SHEET (Provisional)****CAST NYLON FILM****IMP430**

Cast Nylon (PA6) Film

Cast Nylon (PA6) film suitable for use in deep draw thermoformable applications, vacuum packaging and liquid material packaging. Cast Nylon films offer superior puncture resistance for vacuum and skin packaging of sharp, hard items.

PRODUCT FEATURES

- High impact and burst strength, high puncture resistance
- High tensile strength, reduced tear resistance
- Excellent abrasion resistance
- Protects against flex and stress cracking
- Usable in hot and cold packaging conditions
- Excellent resistance to oils, fats, grease and many chemicals

APPLICATIONS

- Used in laminations for deep drawable applications
- Suitable for use in many non-food applications such as packaging of objects with hard or sharp edges.
- Suitable for use in vacuum and liquid material packaging applications

PROPERTIES	TEST METHOD	UNITS	IMP430	IMP430
GENERAL				
Thickness	ASTM D374	ga	80	315
Density	ISO1183	g/cm ³	1.14	1.14
Yield	ASTM D-4321	lb/ream	14.0	56.0
	ASTM D-4321	in ² /lb	30800	7700
Treatment	Corona side	ISO8296	dynes/cm	50
SURFACE				
COF	Treated side	ASTM D-1894	0.10 - 0.30	0.10 - 0.30
	Untreated side	ASTM D-1894	0.05 - 0.15	0.05 - 0.15
MECHANICAL				
Tensile Strength (at break)	MD	ASTM D-882	Psi	7200
	TD	ASTM D-882	Psi	11500
Elongation to Break	MD	ASTM D-882	%	150
	TD	ASTM D-882	%	350
BARRIER				
Oxygen Transmission Rate	(73°F/0% RH)	ASTM F-1927	cc/100in ² /24h	3.25
Water Vapor Transmission Rate	(100°F/0% RH)	ASTM F-1249	g/100in ² /24h	0.39

Guidelines for storage

High moisture is the primary cause of processing problems, so significant attention should be paid to the following advice:

1. The film is specially wrapped to exclude moisture and this should be preserved if film is stored. Do not open wrapping until rolls are being used.
2. If a part roll remains after use, it must be immediately re-sealed in aluminum foil wrapping to exclude moisture in storage.
3. Nylon film must be dry to be printable. Film which has not been stored correctly will show inferior ink key and adhesion properties.
4. Film should be printed in a dry, non-humid environment to avoid the film curling and taking up moisture.

FDA Compliance: For information regarding food contact compliance, please contact your Impak Films representative

Information in this publication refers to typical values of laboratory tests on samples from standard production. It is believed to be accurate and is given in good faith, but it is for the customer to satisfy themselves of the suitability of the material for their specific application. Accordingly, Impak Films gives no warranty as to the fitness of the product for any particular purpose and any implied warranty or condition (statutory or otherwise) is excluded except to the extent that such exclusion is prevented by law. This document is not a product specification. Impak Films reserves the right to change the data sheet at any time without prior notification.

IMPAK FILMS AUSTRALIA (www.impakfilms.com.au)

ABN: 42 586 823 597 Address: Unit 1, 15-21 Butler Way, (P.O. Box 1114), Tullamarine Vic. 3043, Australia Telephone: +61 3 9310 5540 Facsimile: +61 3 9310 5590

IMPAK FILMS USA (www.impakfilms.com)

Address: 2727 Paces Ferry Road, Atlanta, Georgia 30339, USA Telephone: +1 866 606 7896 Facsimile: +1 678 384 5543